

# Galati Steel Plant and Pipe Factory

Investment Opportunity Overview





### **Galați Steel Plant:**

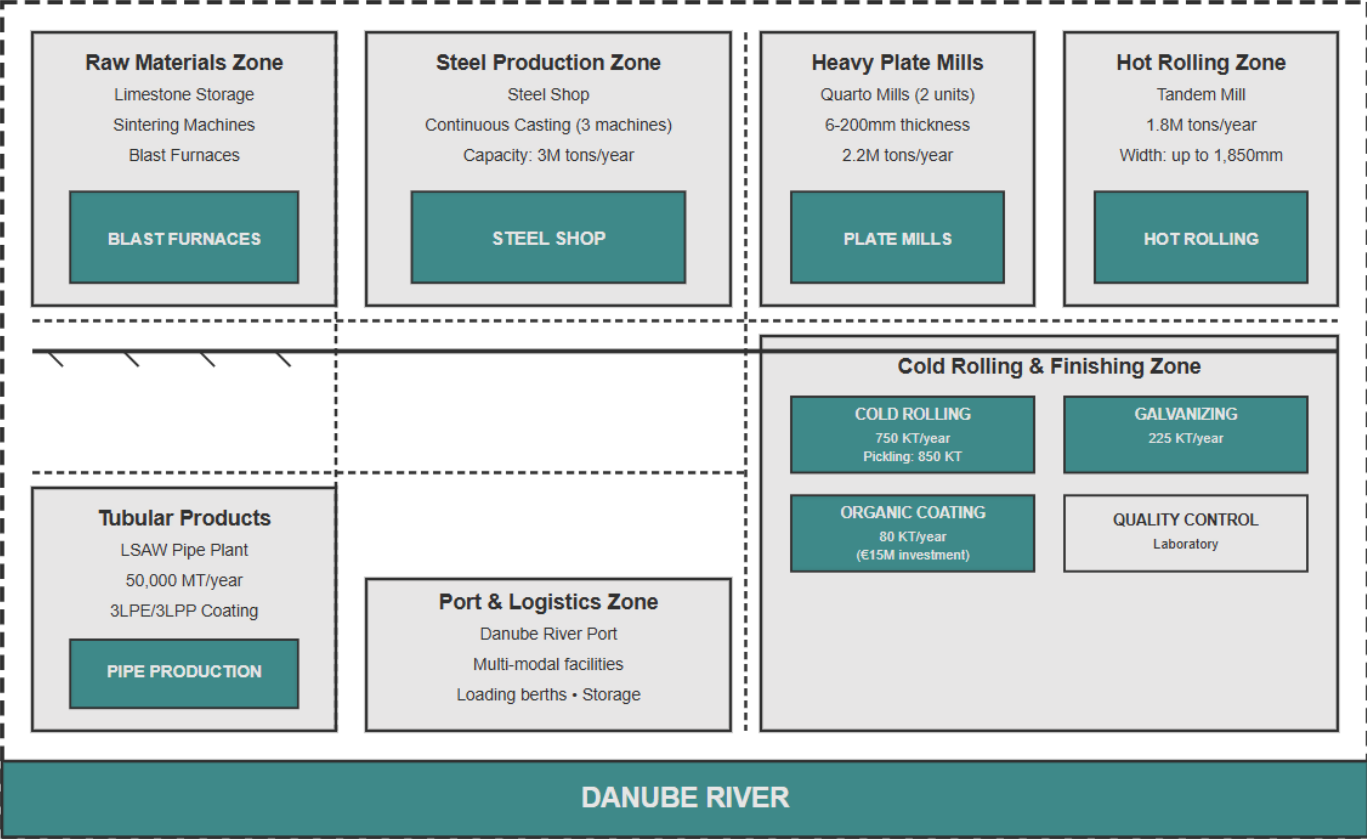
Romania's largest integrated steel producer, 3 million tons capacity, 55+ years operational history

**Pipe Factory (Tubular Products):** Specialized LSAW pipe manufacturer, 50,000 MT capacity, advanced coating capabilities

## **Executive Summary**

- Strategic Danube River location with port access
- Assets will be sold through transparent public tender

# Site Plan



# Galati Steel Plant Overview



## Key Milestones

- ✓ 1960-1966: Construction phase, 12,000+ workers
- ✓ 1968: First steel production at Steel Shop No. 1
- ✓ 1988: Peak production of 8.2 million tons
- ✓ 2001: Privatized to Mittal Steel
- ✓ 2006: Acquired by ArcelorMittal
- ✓ 2019: Acquired by Liberty Steel Group

## Scale & Capacity

- ✓ Founded in 1966, operational since 1968
- ✓ 1,600 hectares industrial area, 45 km perimeter infrastructure
- ✓ 3 million tons annual capacity
- ✓ €450M turnover, 80% exported to 30+ countries

# Primary Production Assets

## Steelmaking:

- 3 Sintering Machines (2 operational)
- 2 Blast Furnaces (1 operational)
- Steel Shop: 3 Continuous Casting Machines
- Capacity: 3 million tons annually

## Heavy Plate Mills:

- 2 Quarto Mills (1 operational)
- Capacity: 2.2 million tons/year
- Thickness: 6-200mm
- Uses: shipbuilding, offshore, structures

---

# Rolling & Finishing Facilities

## Hot Rolling:

- Tandem Mill: 1.8 MT capacity
- Cut-to-length: 100 KT capacity
- Width: up to 1,850mm

## Cold Processing:

- Cold Rolling: 750 KT capacity
- Pickling Line: 850 KT capacity
- Precision automotive control

## Surface Treatment:

- Galvanizing: 225 KT capacity
- Organic Coating: 80 KT capacity (€15M investment, largest in Romania)

# Complete production flow

## The Hot Flow



Brought from overseas,  
the raw materials...



... are prepared  
for processing...



... then, melted in the Blast Furnace, to  
obtain the hot metal...



... the raw material for  
the liquid steel...



... then casted  
continuously and cooled...



... for obtaining the slabs.

## The Cold Flow



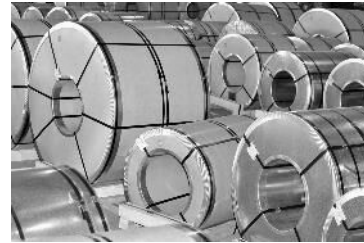
Slabs are  
reheated...



... and laminated in various widths,  
thicknesses, in plates or coils...



... inspected for quality...



... packed...



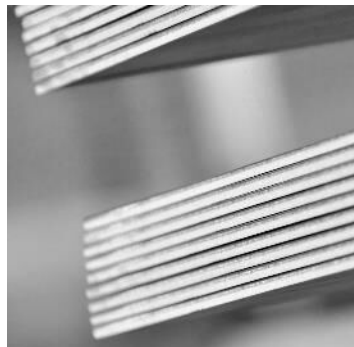
... and sent to the customer by ship, railway  
or trucks.



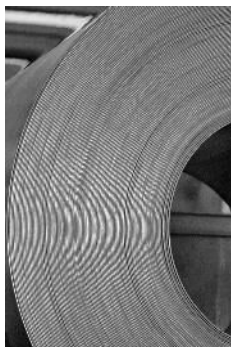


# Main products

Heavy quarto plates



Hot Rolled Coils



Galva products



Organic coated



Welded tubes and pipes



# Key applications



Shipbuilding



Infrastructure



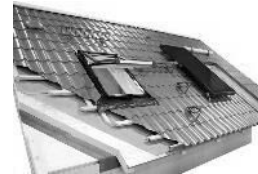
Gas transport



Windmills



Pressure Vessels



Roofing



Automotive

# Infrastructure and Connectivity

## Port Facilities

- ✓ Private Danube River port (Galati) with dedicated loading/unloading berths
- ✓ Direct waterway access for raw materials and finished products
- ✓ Deep-water capabilities for large cargo vessels
- ✓ Integrated with on-site production facilities

## Utilities and Support

- ✓ Industrial power supply infrastructure
- ✓ Water treatment and cooling systems
- ✓ Gas distribution network
- ✓ Maintenance workshops and storage yards

## Multi-Modal Transport Network

- ✓ Rail connections to European railway system
- ✓ Heavy-duty road access for truck transport
- ✓ River transport via Danube to Central Europe
- ✓ Strategic proximity to Constanța Port (Black Sea access)



# The Pipe Factory (Tubular Products) Overview



- ✓ Founded 1986, operational since 1988 – **first LSAW pipe plant in Romania**
- ✓ Located on Galati platform, adjacent to Danube River port
- ✓ **50,000 MT annual capacity** – LSAW (Longitudinal Submerged Arc Welded) pipes
- ✓ Diameter range: 508-1,422 mm (20"-56") - Wall thickness: 6.35-25.4 mm (0.25"-1")
- ✓ 1989: Accredited with API-5L license for pipeline quality standards
- ✓ 2018: Acquired by Liberty Steel Group, integrated operations with Liberty Galati
- ✓ 2023-2024: **Commissioned new 3LPE/3LPP coating line for external/internal protection**
- ✓ Raw material sourced from Liberty Galati plate mill – vertical integration advantage

---

The Pipe Factory includes industrial halls, specialized pipe manufacturing equipment, coating installations, and quality control systems.

---



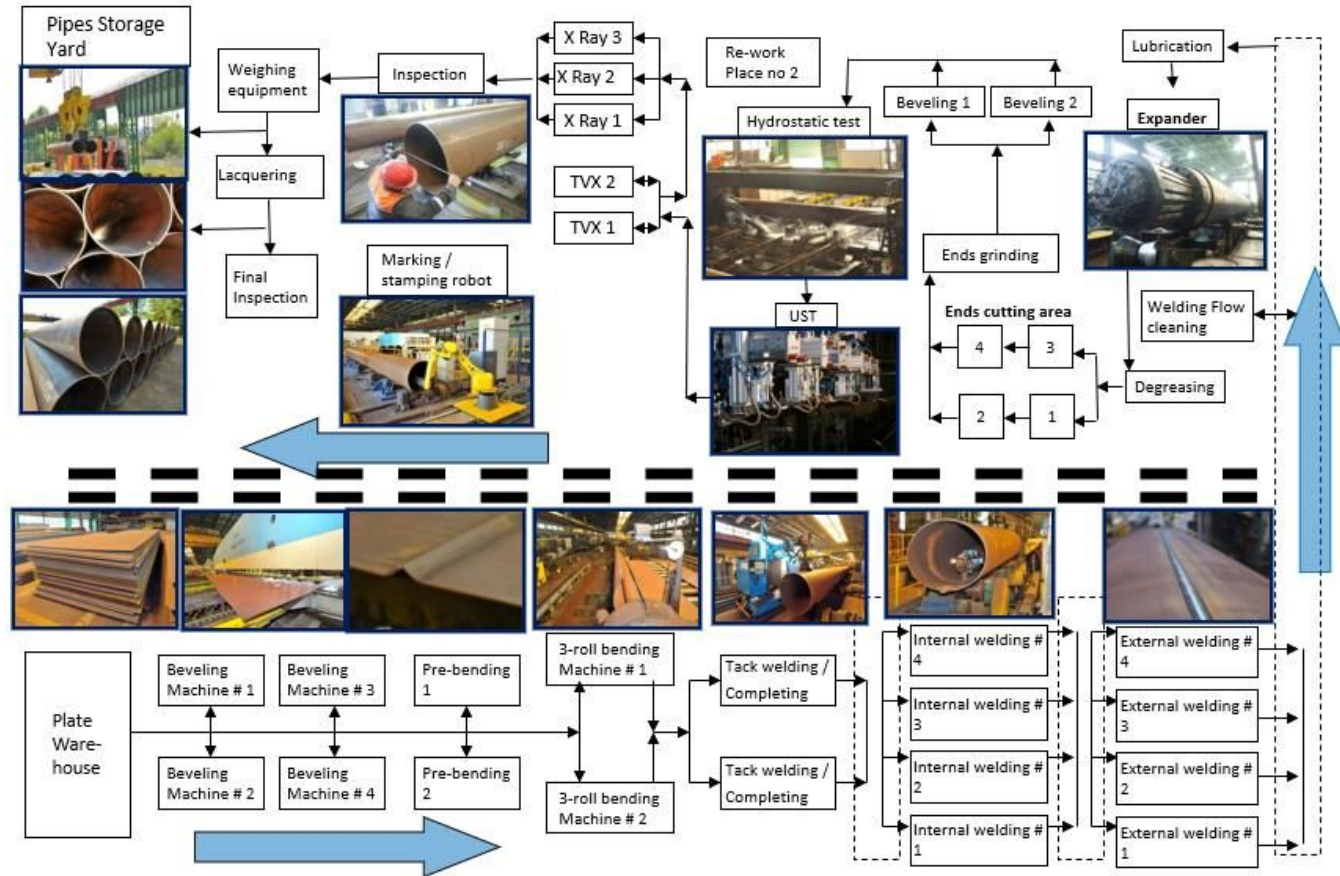
# Capabilities

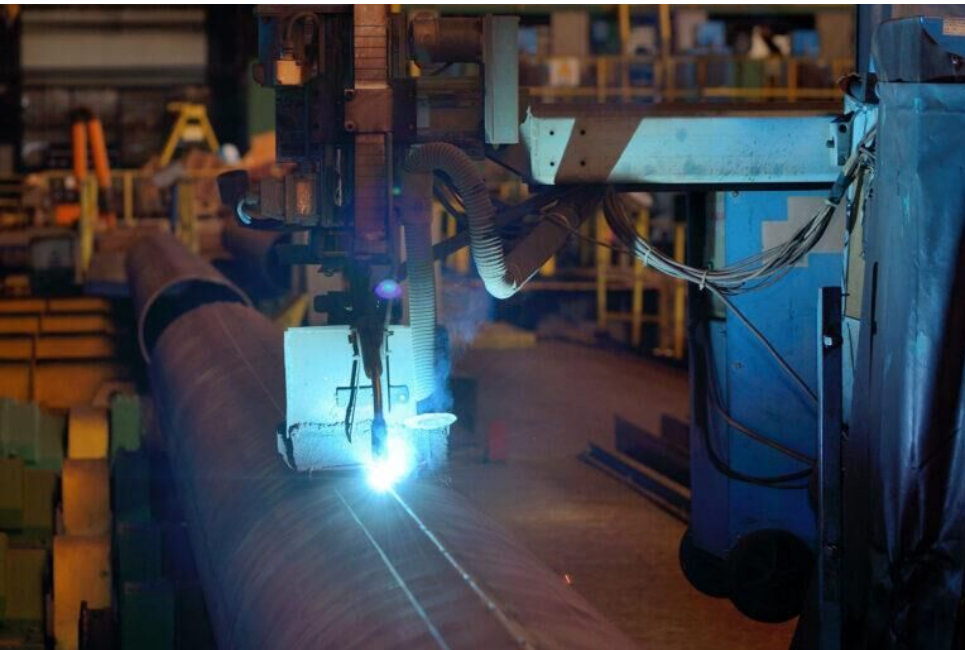
LSAW Product	Norm	Grade	Diameter	Wall thickness
Welded steel pipes for pipeline for use in pipeline transportation systems in the petroleum and natural gas industries	API 5L & ISO3183	L245/B to L485/ X70 (PSL1)	20" ÷ 56" (508 ÷ 1422mm)	0.250" ÷ 1" (6.35 ÷ 25.4 mm)
		L245N/BN to L415N/X60N (PSL2)		
		L245M/BM to L485M/X70M (PSL2)		
		L245NS/BNS to L360NS/X52NS (PSL2) Annex H / Sour Service		
		L245MS/BMS to L485MS/X70MS (PSL2) Annex H / Sour Service		
		L245NO/BNO to L360NO/X52NO (PSL2) Annex J / Offshore		
Cold formed welded structural hollow sections of non-alloy and fine grain steels	ISO 3183 (Annex A)	BNE/L245NE to X60NE/L415NE		
		BME/L245ME to X70ME/L485ME		
	EN 10219-1 EN 10225	S235 JRH; S275 JOH; S275 J2H; 355 JOH; S355 J2H S355 G2 – G10		
Welded steel tubes for pressure purposes; Non alloy tubes with specified room and elevated temperature properties	EN 10217-1 / 5	P195 TR1; P235 TR1; P265 TR1; P195 TR2; P235 TR2; P265 TR2; P235 GH TC1; P265 GH TC1; P235 GH TC2; P265 GH TC2		

LSAW Product	Norm	Grade	Diameter	Wall thickness
Welded tubes of non alloy steels with special quality requirements	DIN 1626	ST37.0; ST44.0; ST52.0		
General purpose electrically welded straight seam steel pipes	GOST 10706	St 3sp		
Electric-Fusion Steel Pipe (Arc)-Welded	ASTM A 134	A; B; C		
Electric-Fusion-Welded Steel Pipe for Atmospheric and Lower Temperatures	ASTM A671/A671M	CB 60;CB65;CB70;CC 60; CC65;CC70 (class 10 ÷ 13 / 20 ÷ 23 / 30 ÷ 33 / 40 ÷ 43)	20" ÷ 56" (508 ÷ 1422 mm)	0.250" ÷ 1" (6.35 ÷ 25.4 mm)
Electric-Fusion-Welded Steel Pipe for High-Pressure Service at Moderate Temperatures	ASTM A672/A672M	A45;A50;B60;B65;B70;C55;C60; 65;C70 (class 10 ÷ 13 / 20 ÷ 23 / 30 ÷ 33 / 40 ÷ 43)		
Non-alloy steel tubes for the conveyance of water and other aqueous liquids	EN 10224	L235; L275; L355		
Welded steel tubes for pressure purposes conditions - Alloy fine grain steel tubes	EN 10217-3	P275 NL1 & NL2 P355 N & NH P355 NL1 & NL2 P 460NH		
NOTE		Longitudinally Submerged Arc Welded Steel Pipes		
PROTECTION		Mill lacquer and bevel end protectors		
COATING		3LPE coating as per DIN 30670 / ISO 21809-1		



# Production Flow





## Strategic Advantages

- Danube River location with excellent logistics
- Direct port facilities for export
- Rail and road connections to EU markets
- Proximity to Black Sea shipping routes
- Complete integrated steel production chain
- Established customer base across Europe
- Modern finishing facilities with advanced coating technology



**Thank you for your  
interest.**



**CITR**

O COMPANIE  
IMPETUM GROUP



**EURO Insol**

Contact us at:

[office@euroinsol.eu](mailto:office@euroinsol.eu) and [office@citr.ro](mailto:office@citr.ro)